



- Single Stage, Water cooled,
Stationary Type
- Two Stage, Water cooled,
Stationary Type
- Water cooled, Oil Free,
Stationary Type



 **SWAN**
AIR COMPRESSOR

WD-2150

Content with Demand

堅毅從容 昂揚悠游 品質信賴 暢行世界

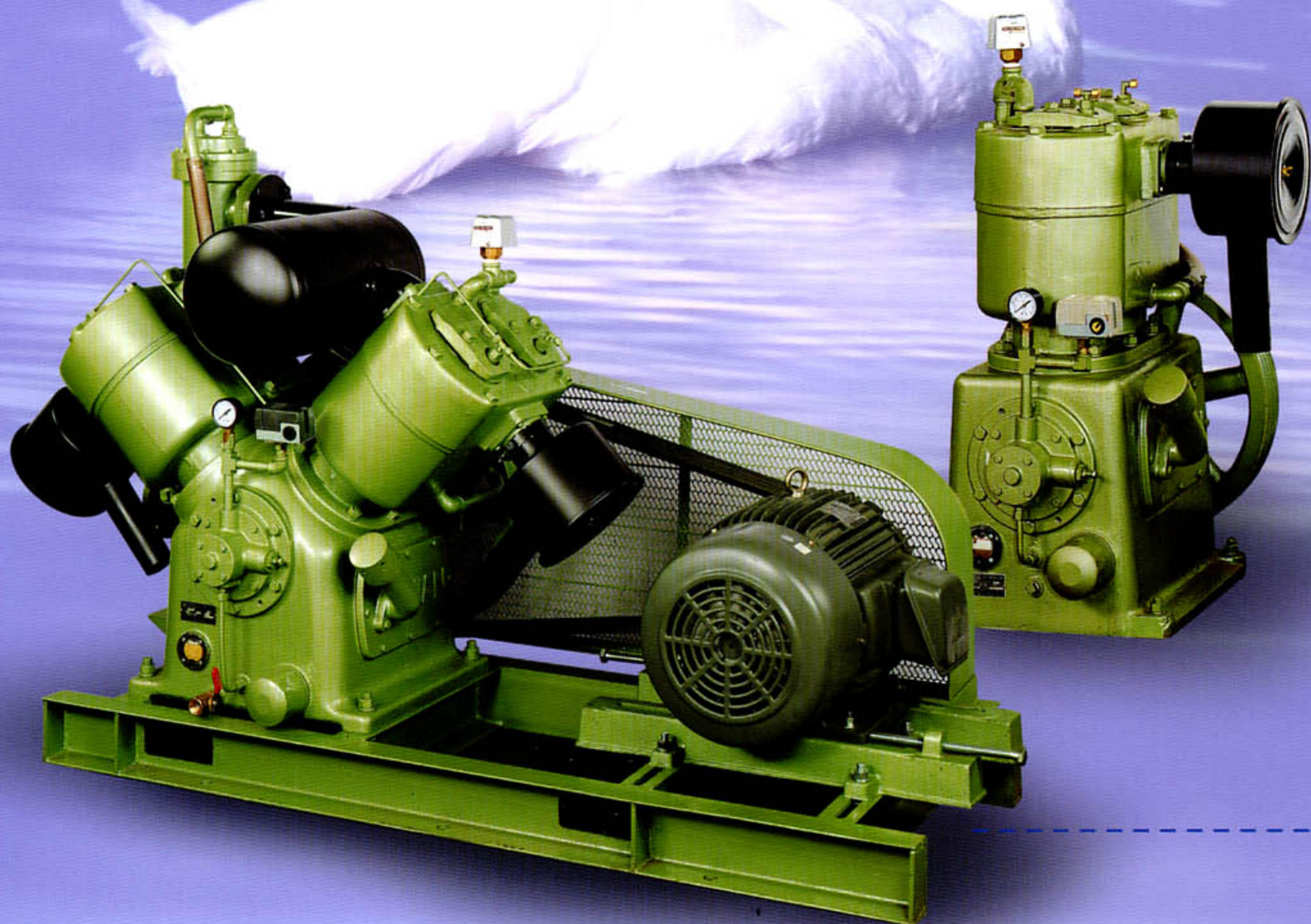
以不斷的研究創新，提供高效率、低污染、少維護、高耐用的產品

以不變的品質意識，提供良好的售前規劃、售後服務

客戶滿意的實踐是我們40多年不變的承諾

Our dedication to technological advancement has lead to **SWAN** providing most efficient, reliable air compressor products to all our customers in the world.

With consistent quality consciousness, We provide the detailed pre-sales planning and after service. Satisfaction of customer requirements is our consistent management priority for almost half a century.



Water Cooled, S



雙段水冷固定式

Water Cooled, Two Stage, Stationary Type

馬力：15HP~50HP

壓力：15kg~20kg

- 兩段式壓縮，兩段式冷卻，提高壓縮效率。
- 強化耐壓結構設計，安全、耐用。

H. P. : 15 - 50 HP

Working Pressure : 15 - 20 kg/cm²

Key Features:

Two stage compression with two stage water circular cooling largely increase the efficiency. Built tough and well proven design reducing down time and lower maintenance cost.

單段水冷固定式

Water Cooled, Single Stage, Stationary Type

馬力：15HP~50HP

壓力：5kg~10kg

- 冷卻水冷卻，耐受較高環境溫度並降低工作溫度，延長壽命。
- 固定式安裝，減少震動，降低噪音，減少故障。
- 油幫浦潤滑，充份確實，減少機器磨耗。
- 失油、失水、過載保護，增加長期運轉信賴性。

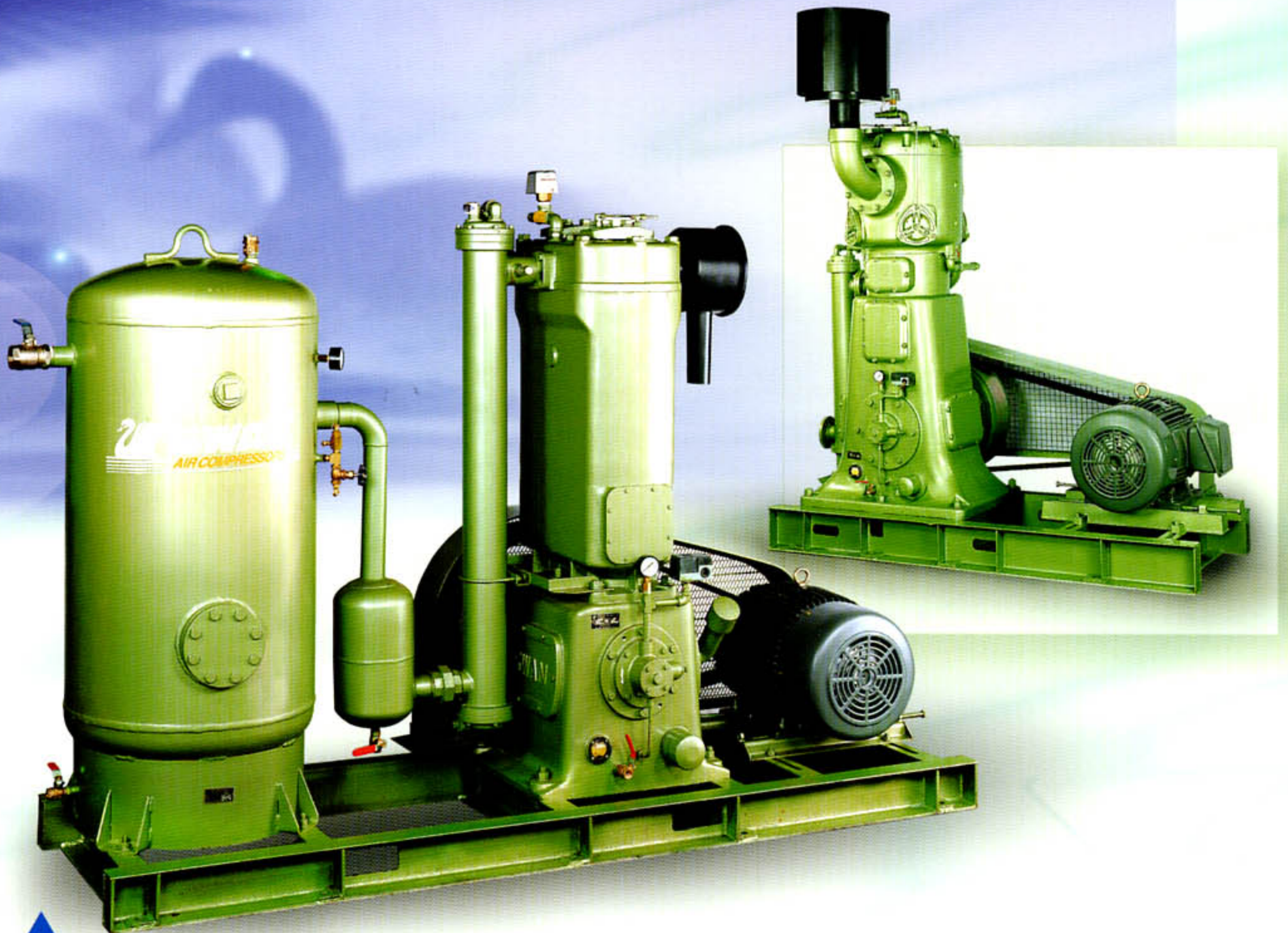
H. P. : 15 - 50 HP

Working Pressure : 5 - 10 kg/cm²

Key Features:

Cooling water flows into the water chamber to reduce operating temperature and extend working life; ideal for working in high ambient temperature. Stationary installation reducing vibration and therefore low noise and ensure reliable running. Enforced lubrication system circulates oil under pressure to lube the moving parts properly and reduce the mechanical consumption. Low oil pressure and low water flow switches are fitted for protection.

水冷固定式空氣清淨系統 Stationary Type



▲ 水冷無油固定式 Water Cooled, Oil Free, Stationary Type

馬力：10HP~125HP

壓力：5kg~10kg

- 氣缸超硬電鍍並經鏡面研磨，PTFE活塞環及導環，確保潤滑性及耐磨性。
- 特殊刮油組合及確實的止漏組合的設計，確保無油空氣的品質。
- 40HP以上採複動式設計，75HP以上採雙段複動式壓縮設計。

H. P. : 10 - 125 HP

Working Pressure : 5 - 10 kg/cm²

Provide clean, high quality, oil-free compressed air.

Think future, switch to SWAN oil-free compressors as "green" energy source.

Key Features:

Alloy cast iron cylinders with corrosion resistant chrome-plated and mirror-surface grinding; PTFE special piston rings fitted to provide smooth running and long life.

Unique oil scraper assemblies are fitted around piston rods to ensure clean, high quality, oil-free compressed air.

Single stage, double acting mechanism for 40 hp and above; Two stage, double acting for 75 hp and above.



■ 水冷固定式 (TW 系列) WATER COOLED STATIONARY TYPE (TW SERIES)

型號	Model	TW-215	TW-220	TW-225	TW-430	TW-440	TW-450
馬達	Motor(HP)	15	20	25	30	40	50
缸徑x衝程x缸數	B.xSXNo.of Cy (mm)	140X127X2	150X127X2	165X150X2	140X127X4	150X127X4	165X150X4
使用壓力	Working Pressure(kg/cm ²)	7					
活塞變位量	Displacement (l/min)	2248	3142	3656	4692	6374	7700
氣筒容量	Tank Capacity (liter)	300			400		700

■ 水冷固定式 (HTW 系列) WATER COOLED STATIONARY TYPE (HTW SERIES)

型號	Model	HTW-215	HTW-225	HTW-430	HTW-450	HTW-215S	HTW-225S	HTW-430S	HTW-450S
馬達	Motor(HP)	15	20-25	30	40-50	15	20/25	30	40-50
缸徑x衝程x缸數	B.xSXNo.of Cy (mm)	L:140X127X1 H: 77X127X1	L:165X150X1 H: 95X150X1	L:140X127X3 H:140X127X1	L:165X150X3 H:165X150X1	L:140X127X1 H: 77X127X1	L:165X150X1 H: 95X127X1	L:140X127X3 H: 95X127X1	L:165X150X3 H:125X150X1
使用壓力	Working Pressure(kg/cm ²)	12				16			
活塞變位量	Displacement (l/min)	1446	1924-2406	2933	3849-4907	1310	1700-2181	2463	3272-4234
氣筒容量	Tank Capacity (liter)	300		700		300		700	

■ 水冷固定式 (無油式) WATER COOLED STATIONARY TYPE (OIL FREE)

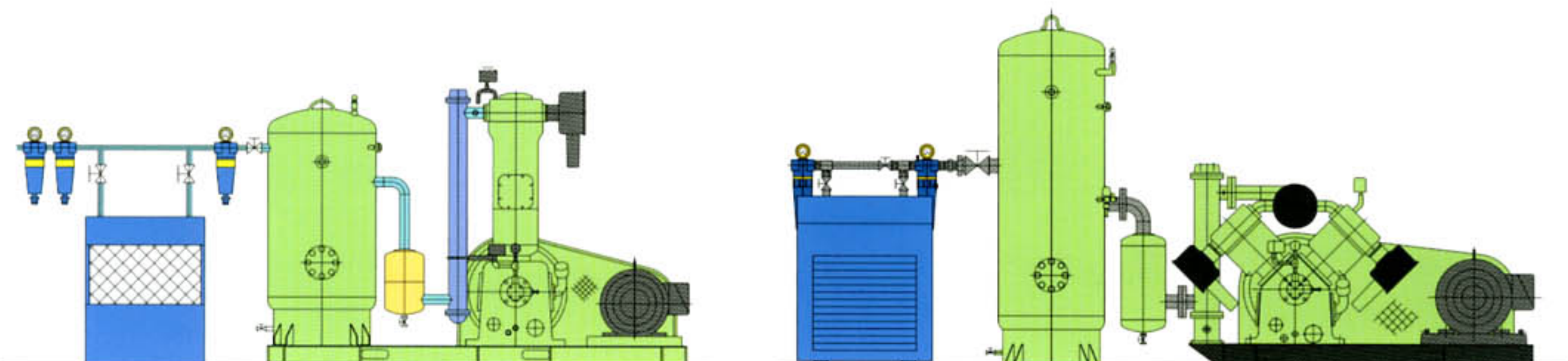
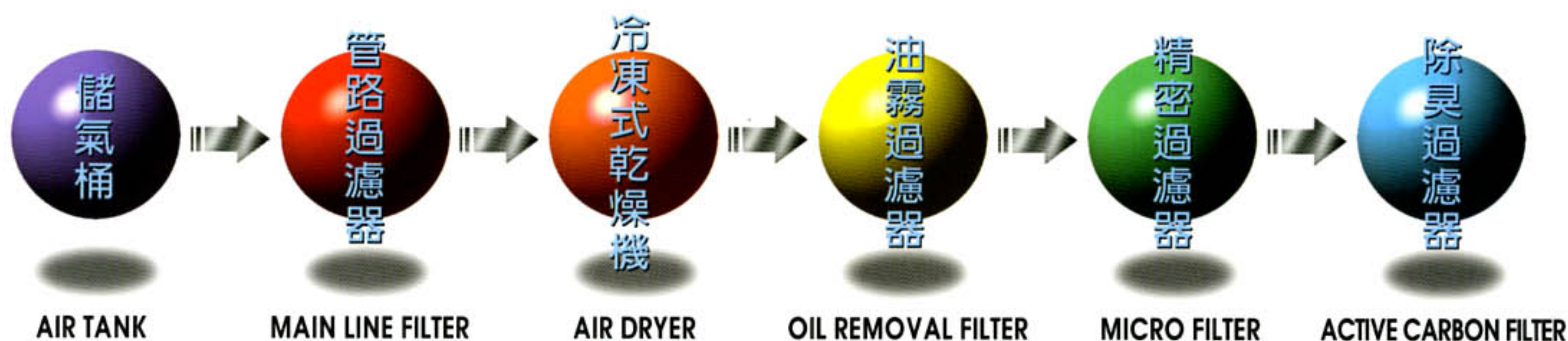
型號	Model	WD-220	WD-240	WD-160	WD-2150
馬達	Motor(HP)	10/15/20	20/25/30	50/60	75/100/125
缸徑x衝程x缸數	B.xSXNo.of Cy (mm)	140X127X2	165X150X2	305X180X1	L:305X180X1 H:184X180X1
使用壓力	Working Pressure(kg/cm ²)	7			
活塞變位量	Displacement (l/min)	1446-3089	3089-4106	7891-9469	10000-16044
氣筒容量	Tank Capacity (liter)	300	300	700	1300

Compressed Air Cleaning System

Comprehensive range of filters to meet the requirement from different industrial user.

空氣清淨化系統

★因應客戶不同的用途，不同的空氣清淨化需求，提供不同等級的過濾系統。





東正鐵工廠股份有限公司
TONG CHENG IRON WORKS CO., LTD.

公 司：台中市東區信義街116號
電 話：(04)2822612 FAX:(04)2822469
廠 址：台中市南區大慶街二段16號
電 話：(04)2612135 FAX:(04)2628246
台北營業所：TEL:(02)22991285 FAX:(02)22982296
台中營業所：TEL:(04)2822612 FAX:(04)2822469
台南營業所：TEL:(06)2539848 FAX:(06)2539849
高雄營業所：TEL:(07)2513197 FAX:(07)2418135
Head Office:116 Shing Yee St.,Taichung, Taiwan
TEL:886-4-2822612 FAX:886-4-2822469
Factory:16 Ta Chin St. Sec.2, Taichung
TEL:886-4-2612135 FAX:886-4-2628246
E-Mail : swantc@tcts.seed.net.tw
Home Page: www.swanair.com.tw